



Domus 2s

Alternating Pressure Redistribution System

Domus 2s is an easy-to-use system to provide effective support to the patient. It is a 5" height one-piece mattress overlay with heel slope for better heel pressure relieve, it also features 1 in 2 alternating pressure relief function to aid in the prevention and treatment of pressure ulcers. Domus 2s is an ideal system that provides effective pressure relief with comfort in a cost-effective manner to patients who are assessed to be at low to medium risk of developing pressure ulcers.

Care for a Healthy Life

APEX

Domus 2s

Alternating Pressure Redistribution System

Features ▼

- Easy to use adjustment settings.
- Adjustable hangers for most bed types.
- Flame retardant and medical grade one piece pad.
- Easy to use one piece design without extra air hose tubing.



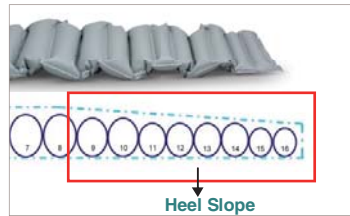
Adjustable Hangers
Suitable for most bed end panels.



Weight Indicator Reference
To facilitate optimized pressure setting.



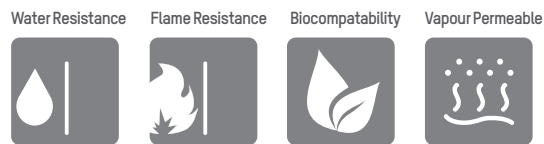
Extension flaps
Can be tucked under the standard mattress for stabilization



Heel slope (to relieve pressure on the heels)
Allow the pad to fill in the space behind the Achilles tendons so that pressure is distributed over the entire lower legs, reducing pressure on the heel.



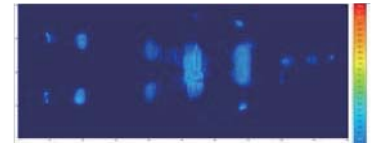
Optional Nylon/PU Cover
Vapor permeable and water resistant with basic flame retardant level.



Patient: 170 cm/ 80 kg/ Male
Inflation of A cells



Inflation of B cells



Specifications

Pump	Dimension	23.7 x 11.2 x 9.5 cm
	Weight	1.2 kg
	Case Material	Flame retardant ABS
	Supply Voltage	AC 230V, 50 / 60 Hz ; 120V, 60Hz
Operating Cycle		9.6 min (230V) ; 8 min (120V)
Mattress	Dimension	5" Overlay Mattress
	Dimension	200 x 85 x 12.5 cm (H5") w/heel slope at 9 cm(3.5")
	Alternating	1 - in - 2
	Cell Height	16 x 5" ~ 3.5" cells
	Weight	3.1 kg
	Material	Medical - grade PVC
	Maximum Patient Weight	120 kg
	Flame Retardant Standards	EN 597-1 & EN 597-2

Distributed by

Apex Medical Corp.
No. 9, Min Sheng St., Tu-Cheng,
New Taipei City, 23679, Taiwan
T +886 2 2268 3100
F +886 2 2268 6525
marketing@apexmedicalcorp.com
www.apexmedicalcorp.com
Print-2016/03 All rights reserved
Specifications may change without notice.



Specifications are subject to change for improvement without notice.